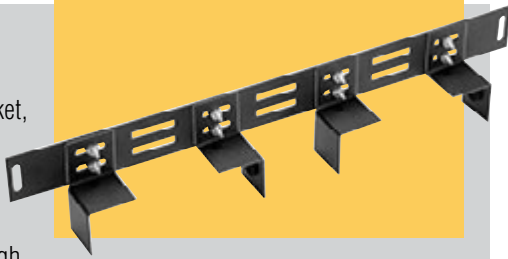


### Equipment Tie Down Bracket

Heavy gauge steel bracket, in 19" panel width, will secure your equipment within open or enclosed cabinet racks. Front panels are 1U (1.75") high.

**Finishes:** Black Texture (BT) or Metallic Gray (MG)  
Includes all mounting hardware.



| Model No. | Panel Width | Weight Lbs. |
|-----------|-------------|-------------|
| EB-1781   | 19.00"      | 1.1         |

### Panel Extender

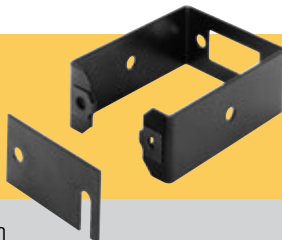
Heavy gauge steel brackets extend panels 5.00" beyond normal panel mounting rails. Panel mounting holes on EIA universal spacing. **Finish:** Black. Sold in pairs. Includes all mounting hardware.



| Model No. | Panel Height | Est. Weight Lbs. |
|-----------|--------------|------------------|
| PE-1600   | 3.50"        | 1                |
| PE-1601   | 5.25"        | 2                |
| PE-1602   | 7.00"        | 2                |

### Cableway Ring

Mounts to side of open rack to provide vertical cableway. Can be used between two adjacent racks. Heavy gauge steel Available in two depths. **Finish:** Black. Includes all mounting hardware.



| Model No. | Size (W x D)  | Est. Weight Lbs. |
|-----------|---------------|------------------|
| CM-1195   | 3.00" x 4.00" | 1                |
| CM-1196   | 3.00" x 6.00" | 1                |

### Cable Rings

Heavy gauge steel rings occupy 1U (1.75") of panel space. **Finish:** Black. Includes all mounting hardware.



| Model No. | Size (W x D)  | Est. Weight Lbs. |
|-----------|---------------|------------------|
| CM-1220   | 1.25" x 3.50" | 1                |
| CM-1221   | 3.00" x 3.50" | 1                |

### Cableway Cover

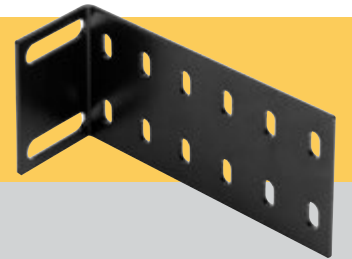
Formed steel covers mount to the front and rear of cableway rings to protect cables and present a finished look to your cabling installation. **Finish:** Black. Used on 7' tall open racks. Sold in pairs. Includes all mounting hardware.



| Model No. | Size (W x D)   | Est. Weight Lbs. |
|-----------|----------------|------------------|
| CM-1197   | 3.00" x 83.00" | 10               |

### Cable Bracket

Heavy gauge steel brackets occupy 1U (1.75") of panel space. **Finish:** Black. Includes all mounting hardware.



| Model No. | Size (W x D)  | Est. Weight Lbs. |
|-----------|---------------|------------------|
| CM-1223   | 1.75" x 3.50" | 1                |

### Cable Management Panel

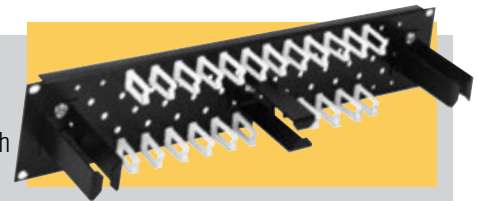
Designed for 19" panel width racks. Heavy 18 gauge formed steel panel, with twelve plastic cable clips. **Finish:** Black. Includes all mounting hardware. **Accessories:** Additional plastic cable clips Model No. CM-1229. Twelve clips per package.



| Model No. | Size (H x W)   | Est. Weight Lbs. |
|-----------|----------------|------------------|
| CM-1225   | 1.75" x 19.00" | 1                |

### Cable Management Panel

Designed for 19" panel width racks. Heavy 18 gauge formed steel panel with twenty-four plastic cable clips and three CM-1220 cable rings. **Finish:** Black. Includes all mounting hardware. **Accessories:** Additional plastic cable clips Model No. CM-1229. Twelve clips per package.



| Model No. | Size (H x W)   | Est. Weight Lbs. |
|-----------|----------------|------------------|
| CM-1227   | 3.50" x 19.00" | 3                |